



Herman Miller showed their latest products and developments in conjunction with ICFF but instead of exhibiting at the Javits Center, they set-up shop at the Standard Hotel in the Meatpacking district.

Above, the Puppy sculptures on the terrace at the Standard. Puppy was designed by Eero Aarnio for Magis and can function as a child's stool, toy or sculpture.



Part of the outdoor collection, The Venice Chair (designed by Konstantin Grcic for Magis) made for a colorful splash on the terrace. Above right, the TPG team being shown the collection.





With the help of today's 3-D veneer technology, the company was able to develop the Eames side chair in wood. Available in walnut, white ash, and santos palisander, the company said the new process "gives [the] wood veneer the extra flexibility it needs to be molded into the complex curves of a single shell."



Above, prototypes of the new, but "faithfully reproduced" Eames Molded Fiberglass Chair. The new chairs are produced using a less volatile "dry bind" method to mitigate VOCs and achieve a monomer-free resin, according to the company. Public Launch: September 23, 2013. The chairs are here seen with the new Osso Table.



Herman Miller showed a medley of accessories part of an alliance with Magis. Seen here is the Poppins umbrella stand (bottom right) which comes in orange, white and black; Cu-Clock (top row); and one-piece desk tidy (second shelf from top).



Part of the Herman Miller Outdoor collection, the Medici Chair, designed by Mattiazzi for the Collection, is made out of thermo-oiled ash finish. It's shown here with the newly launched foot rest and side table.



Hanging-It-All coat rack designed by Charles and Ray Eames, here hanging on the walls of the Standard.



Transit, the trolley carts designed by David Mellor for Magis, are being launched to the public in October. The carts are available in white or grey.



The company previewed the new office chair Mirra 2, a redesign of the 2003 original. The new chair "adapts to you instantly," according to the firm, further explaining that the new chair is "leaner, lighter, and more responsive." The pro-order period will run through the summer and the public launch is slated for Fall 2013.





Amy Weisman of TPG by the Tuxedo Component sofa and Noguchi Rudder Table. The table has two metal hairpin legs and one in wood “shaped like a ship’s rudder.”



Above, Suzette Rhodes of Herman Miller showing the Tuxedo Component Lounge chair (here shown with and without arms) to the TPG team.



Above, sofas from the Wireframe Group, designed by Sam Hecht and Kim Colin, a new design for Herman Miller. The wireframe external structure transforms into a supportive suspension technology under the cushions. Also showing are the 5 re-editions of Alexander Girard textiles.



Susan Pavlovsky under an oversized lamp.



The future of office design? A high-tech foosball table from RS Barcelona.



Console table and stool from Dunn.



Lasercut light fixtures around ICF.





Interestingly shaped stools.



Mod inspired stools by Yeji Kim.



Console table by Black Wolf Design.



Bench by Ben Sen.



Seating by Vondom.



Nervous Systems showed their Hyphae Lamps - one of a kind 3D-printed lamps with LED fixtures.



Touchable textures were on display at the Hiroko Takeda Textiles booth.



Screens by Razortooth Design





Colorful, well priced office furniture (different color options can be seen in the swatches on the table) at Housefish. Bottom center, the Lock Chair is wrapped in copper.



Interior surfaces and commercial wall coverings company Muraspec / Hodjera Architectural showed their wood products, from beautifully textured panels to a take on a hammock.



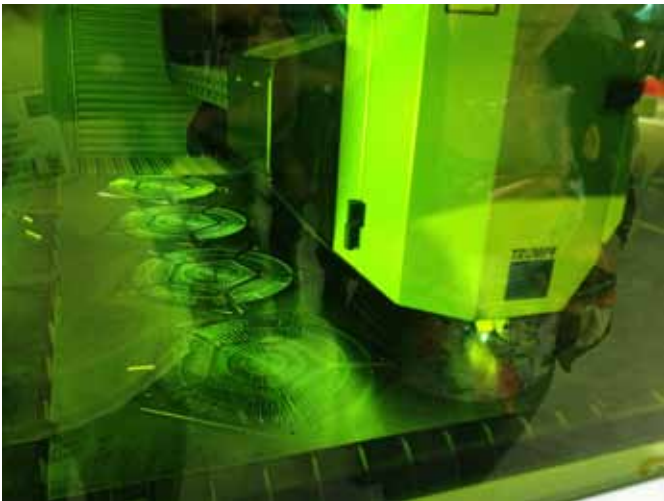
Ombre colored bench at Ercol.



Pol Art's booth brimmed with color. They showed Victorian style furniture with a modern—neon—twist.



Eclectic wallpaper by Juju Papers.



Above, a laser-cutting demonstration which resulted in the multi-faceted light fixtures (far right). This was a collaboration between Tom Dixon, a lighting designer and Trumpf Inc., the “largest manufacturer of sheet metal fabricating equipment and industrial lasers in North America.”







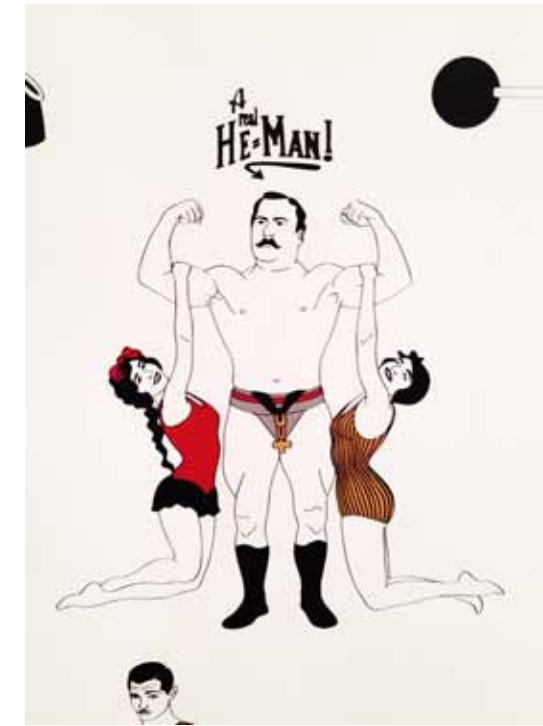
Patrick Townsend light fixture.



Wing chairs at Fritz Hansen.



With black and gold as the main color schemes, the Koket booth emanated sultry sophistication.



Humorous retro wallpapers at Dupenny.





Bernhardt's swivel chairs combined mid-century sleek aesthetic with splashes of color.



Felt covered furniture at the Bernhardt booth.



Whimsical storage at the Donald Baugh booth.



AT Bludot, the new furniture line featured leather handles.



Credenza, part of the well-priced furniture line at Absolutely Home Interior.